

# Naturelink

NEWSLETTER OF THE CRANBOURNE FRIENDS ROYAL BOTANIC GARDENS VICTORIA INC.

## Smart Friend Receives Medal (OAM) of the Order of Australia

by Indra Kurzeme

### Highlights in this issue

Boabs and Succulents 8



Friends Luncheon 2  
- with Elaine Canty



Kangaroo Paw Celebration 15



Alex Smart has received a Medal (OAM) of the Order of Australia in the General Division for service to conservation and the environment. The Friends would like to recognise his enormous contribution to the Australian Garden at Royal Botanic Gardens Victoria, Cranbourne Gardens.

Alex has been an active member of the Cranbourne Friends since becoming a member in 2001. He joined the Committee soon after and was President from 2004 to 2006. In addition, he volunteered to work at the Cranbourne Gardens and was part of the inaugural volunteer group now known as the Garden Ambassadors, taking tours and sharing his love of the Australian Garden.

Alex has gained the respect of all teams involved in the Australian Garden by acting as the Friends' representative, working closely on many occasions with the volunteers and management of the Gardens. Two projects in particular owe much to the time, energy and vision of Alex: the building of the new Growing Friends Nursery and the Elliot Centre. Alex brought his communication and organisation skills to these two major projects, with a clear plan and dedication to the completion of both projects and the Friends have benefited enormously.

Alex also has a great sense of fun and is known for his wonderful sense of humour. He is a very generous man with both his time and thoughtfulness for others. He is always first to acknowledge the good work that others do. Now it is our turn to acknowledge Alex and his generosity and kindness.

Congratulations Alex Smart! We are very proud to call you a Friend.

#### Details of Alex's service:

- Volunteer Guide, (now Garden Ambassador), Royal Botanic Gardens Cranbourne, since 2004 and Volunteer, since 2001.



Alex Smart OAM. Photo: Indra Kurzeme.

- President, Friends of the Royal Botanic Gardens Cranbourne, 2004 - 2006 and Member, since 2001
- President, Australian Association of Friends of Botanic Gardens, 2005 - 2011 and Committee Member, 2004 - 2013
- Member, Wilson Park Branch, Australian Plant Society (APS) Victoria
- Founding and Current Member, APS Wyndham District, since 2007
- President, Werribee River Association, 2005-2011 and Member since 2002
- Member, Western Melbourne Catchments Network Inc.
- Past Treasurer, Friends of Moonee Ponds Creek and Member since 1989
- Member, Friends of Merri Creek, 'for many years'
- Member, Pascoe Vale Naturalists, 1985 - 2000

#### Awards and recognition includes:

- Recipient, Centenary Medal, 2001
- Honorary Fellow, Metrology Society of Australia, since 2003

Cranbourne Friends Royal  
Botanic Gardens Victoria Inc.  
1000 Ballarto Road  
Cranbourne Victoria 3977

Inc no. A0025281B  
ABN 43 551 008 609

Web address:  
[http://www.rbg.vic.gov.au/  
support/support-groups/  
friends-of-rbg/cranbourne](http://www.rbg.vic.gov.au/support/support-groups/friends-of-rbg/cranbourne)



## GROWING FRIENDS AUTUMN PLANT SALE

Saturday 18 and Sunday 19 March 2017

10am to 4pm both days

Cash or cheque preferred

**Royal Botanic Gardens Victoria - Cranbourne**

Plant list will be available on our website one week prior at:  
[www.rbgfriendscranbourne.org.au](http://www.rbgfriendscranbourne.org.au)



## Annual Luncheon

Saturday 6 May  
2017

11.30am

Tarnuk Room,  
Australian Garden  
Visitor Centre

\$65 per person

Bookings Close:  
21 Apr 17

Chat amongst friends before a 3-course lunch and listen to our outstanding GUEST SPEAKER – Elaine Canty AM, long-serving former Chairman of the Royal Botanic Gardens Victoria Board.

It is time to make plans for this event. Think about inviting some other Friends to join you at a table or you can leave it to us to place you at a table where you will meet others sharing the same passion for our Cranbourne Gardens.

Elaine Canty has been described as an Australian pioneer. Now she looks back on a life crammed full of remarkable achievements not only in the world of sports broadcasting, covering four Olympic Games, but also presenting daily current affairs and talk back programs for ABC radio and TV as well as running her own business. Controversially, she was the first female to be appointed to

the AFL Tribunal. She has been a director of various sports and other organisations including the Royal Women's Hospital and several not for profit organisations. She has also chaired a number of Boards including the Queen Victoria market and of course, most significantly to us, she is the immediate past and long serving Chairman of the Royal Botanic Gardens Victoria.

In 2015 her work across Australian media, sport and law was recognised with her appointment as a Member of the Order of Australia.

Get your booking in quickly to ensure a place at this year's Annual Luncheon. If you are reading an electronic copy, please print out and fill in the appropriate booking form and forward to the Friends Booking Officer.

## Acting Director Report

John Arnott



Perhaps the most significant milestone for the Cranbourne Gardens in 2016 was the completion of the Cranbourne Gardens Masterplan, "Connecting through nature and community 2016 – 2026". The plan identifies some key themes that will become the focus of the development of the site in the coming years. These include ways to: manage and develop our plant collections; conserve plant biodiversity; create easier access to the site; provide new visitor experiences; and how to use sustainable technology to better harvest and recycle our non-renewable resources, such as water and power.

Having worked on this document for over 12 months it was quite a moment to see the final printed copies arrive on Chris's deck. The heart-shaped leaf featured on the cover is *Androcalva rossii*. The selection of this species is significant as it is a temperate rainforest species from south-eastern Australia, it is planted in the Gondwana Garden, it is named after Dr Jim Ross, a former Chief Botanist of the National Herbarium of Victoria and it is a species that has conservation significance in Victoria. Find out more about the Masterplan at [https://www.rbg.vic.gov.au/documents/J000266\\_RBGV\\_Cranbourne\\_Gds\\_MasterPlan\\_Online\\_SinglePages\\_06.pdf](https://www.rbg.vic.gov.au/documents/J000266_RBGV_Cranbourne_Gds_MasterPlan_Online_SinglePages_06.pdf)

It was a delight to partner with the Friends in delivery of the successful Kangaroo Paw Celebration throughout November; it was a wonderful series of events culminating with the terrific Haemodoraceae Symposium that brought an accompanying array of experts, authorities and passionate plant people to the garden. There were so many layers to the Kangaroo Paw Celebration; these included the establishment of the kangaroo paw displays in the Australian Garden, the picnic weekend, launch of 'Landscape Violet', the Horticulture Media Association gathering, a wonderfully curated and crafted art exhibition, floral displays and workshops, guided tours with Angus Stewart, self-guided tours, plant sales and of course the crowning of the 'king and



Cranbourne Masterplan

queen' kangaroo paws based on visitors voting in the Promenade Plaza. It was quite a month! A HUGE thank you to all of the RBG staff and Friends involved.

Cranbourne Gardens has made significant contributions to the peak industry group Botanic Gardens of Australia and

New Zealand (BGANZ). Over the past 2 years I have been fortunate to be Convenor of BGANZ Victoria and representative to the BGANZ Council. BGANZ Vic is an active and driving force in the network. Our representatives have chaired numerous national working groups in areas such as communications, record keeping, collections planning, diversity and demographics, and botanic gardens education. Chris Russell was recently appointed as the new convenor of BGANZ Vic and I am very much looking forward to working with them.

As many of you will know, our great friend and colleague Sharon Willoughby has left the RBGV to embark on an exciting adventure in the UK. In March 2017 Sharon will commence in a new role and 'dream job' as Head of Interpretation RBG Kew. Sharon worked for 18 years at the RBGV and led many significant projects, including the interpretation planning and delivery for stages 1 and 2 of the Australian Garden project. Sharon has established herself as an international contributor in the field of interpretation, communicating and fostering the role that botanic gardens play for social inclusion and community engagement. She will be greatly missed by her team and colleagues.

As Acting Director Cranbourne Gardens I wish all involved with the Friends a prosperous and most excellent new year!



## From the President

Indra Kurzeme



Dear Friends,

Welcome to the first edition of Naturelink for 2017.

I have just read the newly published *Cranbourne Gardens Master Plan 2016-2026*. The subtitle, *Connecting through nature and community* sums up the focus of this thorough plan and the actions that the Royal Botanic Gardens Victoria will take over the next ten years to achieve the fifteen goals. The opening paragraph sets the scene for a plan that will transform the Cranbourne Gardens to become a community hub contributing to the environmental, economic, social and cultural health of the region.

*'A botanic garden is no longer a walled garden, separated, inviolate; it spills out across the suburbs involving our community in new relationships and conversations with plants and each other. This vision takes us in bold, new directions that will change what society thinks about the role of a modern botanic garden.'* – Cranbourne Gardens Master Plan, 2016

I encourage you all to read the Plan and if you have an idea or want to discuss how the Friends could contribute, please call me on 0408 002 028 or email me at [ikurzeme@gmail.com](mailto:ikurzeme@gmail.com). The Committee will be discussing the Master Plan in the first half of 2017 to see how and where we are best placed to support the vision for Cranbourne Gardens.

This year's activities continue to be a feast for the mind and spirit. I intend to book early this year, as there are so many choices, these can be found on our website: <http://rbgfriendscanbourne.org.au>. I would like to draw your attention to a session on 2 December, 2017; a long way off but nevertheless you might know someone who would benefit from coming to a special activity day focusing on employment entitled, "Would you like to work with plants?"



Marjanne Rook receiving her well-deserved Honorary Life Membership at the Friends AGM on Sunday 27 November 2016.

Photo: Judith Cooke

Finally, I am very pleased to report that we currently have a healthy number of Friends, around the 700 members mark. However, we are always looking for more friends; if you know someone whom you think would benefit from a membership, please don't hesitate to encourage them to subscribe. The benefits of becoming a Friend are documented on our website under Membership.

See you in the Gardens.

Indra

## Gardens in Spanish Culture Tour

8 - 25 May, 2017

Professor Tim Entwisle, Director and Chief Executive Royal Botanic Gardens Victoria will be co-hosting this tour with Anneli Bojstad.

Spain's distinctive gardening tradition has been shaped by the country's great climatic diversity and its powerful Islamic heritage. This tour places special emphasis upon privileged private garden visits and meetings with Spain's top landscape architects and garden owners.

There will be visits to splendid gardens and great monuments from Spain's Mediterranean Region to Old Castile north of Madrid.

The tour of 18 days includes Seville (3 nights), Cordoba (2 nights), Ronda (1 night), Granada

(3 nights), Toledo (2 nights), Jarandilla de la Vera (2 nights), Segovia (1 night) and Madrid (3 nights).

If you would like further information on this tour being organised by ASA Cultural Tours visit the website [www.asatours.com.au](http://www.asatours.com.au).

# ACTIVITIES CALENDAR FOR MARCH - JUNE 2017

We hope there will be no changes to the program, but if there are, members will be notified via *Quicklink* and/or email.

## MARCH

THU 9

Friends Open House: Culture and Community Day. See page 9.

SUN 12

Visit to Australian Garden by RAW Garden. See page 6.

SAT 18 & SUN 19

Growing Friends Plant Sale. See page 1.

SAT 25

Discovery Day: Melbourne Zoo Butterfly House and Royal Park. See page 6.

## APRIL

SUN 9

Microbats and Night Prowl. See page 7.

SUN 30

Workshop: Backyard Aussie Trees. See page 7.



*Allocasuarina decaisneana*

## MAY

TUE 2

Visit to RAW Garden and Veg Out Community Garden, St Kilda. See page 7.

SAT 6

Annual Luncheon. See page 2.

SUN 21

2018 Activities Planning Day. See page 4.

MON 22 & TUE 23

Pen and Ink Workshop with Pauline Dewar. See page 10.

## JUNE

SAT 3

Bushland Breakfast with Warren Worboys. See page 8.

SAT 17

Workshop: Aussie Succulents and Boabs, and Bottle Trees with Attila Kapitany. See page 8.

SUN 25

Talk: Australian *Eucalyptus*; What's their status?, Frank Udovicic. See page 8.

## Australian Textile Exhibition

Tuesday February 28 to Sunday March 5, 2017  
10am to 4pm daily

Gallery and Auditorium, Australian Garden Visitor Centre

For more information, call 03 8774 2483

Botanical Fabricators

**Don't plan to come to the AUSTRALIAN TEXTILE EXHIBITION on Labour Day Weekend this year!**

**Why? Because it will be over!**

Our sixth AUSTRALIAN TEXTILE EXHIBITION is being held in the Australian Garden Visitor Centre - both upstairs in the Gallery and downstairs in the Auditorium, commencing on Tuesday February 28th and continuing through to Sunday March 5th, from 10am to 4pm each day. Entry is FREE.

The Exhibition will again be co-ordinated by Leesa Chandler and will include demonstrations by leading textile artists in felting, quilting, embroidery and more; plus a Chandler's Cottage Pop Up Shop with beautiful craftwork to buy and loads of inspiration for all. You will be able to purchase a wide range of patterns, kits and products from Chandler's Cottage, plus items made by members of the Friends of RBGV Cranbourne 'Botanical Fabricators' group in the Auditorium downstairs.



Some excellent examples of high quality works on display at the 2016 Australian Textile Exhibition

Leesa has again very kindly donated a lovely quilt that will be first prize in a raffle being organised by the Friends to assist the ongoing development of the Cranbourne Gardens. It is entitled 'Whispering Gums'. Tickets are \$2.00 each and prizes will be drawn at 3pm on March 5th.

## Planning Day for 2018 Activities

Sunday 21 May 2017  
9.30am to 3pm

Elliot Centre, Cranbourne Gardens

All Friends members are urged to participate in what is one of the most important days in the Friends Calendar! This is the day when the Program of Friends Activities for 2018 will be formulated.

Please come along with your thoughts and ideas that could also help to get other people's creative juices going!

We really do want to have a program that caters for the interests of all our Members!

2018 may seem a long way off but we need to

start planning now so that we can offer an exciting program.

If you are not able to attend but have some ideas for activities please pass them on to Chloe Foster via phone: 9725 3569 or email: cf\_1939@hotmail.com

Morning refreshments from 9:30 am; plenty of things to eat & nibble. Meeting to start at 10 am. BYO Lunch.

## (Some of) What's On at RBGV Cranbourne

For enquiries and bookings phone 5990 2200. For information about more activities at RBGV, see <[www.rbg.vic.gov.au](http://www.rbg.vic.gov.au)>.

### MARCH

#### Woodlands Walk

Thursday 16 March 2017  
10am to 12 noon

Woodland Picnic Area  
Suitable for children up to 6 years

FREE

Children and their families are invited to explore the bush and wildlife through storytelling and activities.

Bookings via City of Casey: 9705 5200

#### National Eucalypt Day: Eucalypts for your Home Garden

Thursday 23 March 2017  
9am to 5pm

Cranbourne Gardens  
Suitable for all ages

FREE

Explore our self-guided walk through the Australian Garden - Eucalypts for your Home Garden.

### APRIL

#### Rewilding Public Gardens: Facilitating Nature Play

Thursday 20 April 2017  
9.30am to 4pm

Suitable for adults

Australian Garden Auditorium

\$85 per person

Join our forum to understand what a Bush Kinder is and why there is an increasing demand for outdoor play opportunities in natural spaces.

#### Nature Play Week

Wednesday 12 to Sunday 23 April 2017  
9am to 5pm

Australian Garden Visitor Centre  
All ages

FREE

In conjunction with the Kids in Nature Network - join us for Nature Play Week!

No Bookings Required

### MAY

#### Sustainable Gardening Australia Master Class - Habitat Gardening

Saturday 6 May 2017  
1pm to 3pm

Australian Garden Auditorium  
Suitable for adults

FREE

Learn about the habitat needs of local fauna and how to incorporate this into your yard.

Bookings Essential:  
[casey.vic.gov.au/greenevents](http://casey.vic.gov.au/greenevents), or 9705 5200

## (Some of) What's On at RBGV Melbourne

The following events are presented by the Friends of the Royal Botanic Gardens Melbourne.

For enquiries contact the Friends office on 9650 6398 or at <[friends@rbgfmelb.org.au](mailto:friends@rbgfmelb.org.au)>.

Book events online, or download a booking form from the FRBGM website at <[www.rbgfriendsmelbourne.org](http://www.rbgfriendsmelbourne.org)>.

### MARCH

#### Circle Exhibition

Thursday 16 March to Sunday 14 May 2017  
10am to 3pm

Domain House  
Suitable for adults and children

Gold Coin Donation

Award winning children's author and artist Jeannie Baker's latest picture book, Circle, will be exhibited as a remarkable travelling exhibition.

No bookings required

#### Presentation by Jeannie Baker

Wednesday 15 March 2017  
4.30pm to 6pm

Domain House followed by Mueller Hall  
Suitable for adults

\$25 per person

Join Jeannie Baker in a presentation for teachers, librarians, schools and anyone else interested. Share Jeannie's own journey across the globe to observe the Godwits.

Bookings: 9252 2300

### APRIL

#### Easter Hunt

Saturday 15 April 2017  
10am to 12 noon

Children's Garden:  
Suitable for children, 2 to 6 years

\$15 per child

Join the Easter Hunt in the Children's Garden! Receive chocolate eggs and some special Easter prizes!

Bookings: 9252 2300

#### Nature Play Day

Friday 21 April 2017  
10am to 12 noon

Children's Garden  
Suitable for children and families

FREE

Join us to celebrate Nature Play Week with free activities in the Children's Garden and across the wider Melbourne Gardens.

No bookings required

### MAY

#### Reconciliation Week Walk

Sunday 28 May to Friday 2 June 2017  
11am to 12.30pm

Visitor Centre, Observatory Gate  
Suitable for all ages

FREE

Bookings 9252 2300



## Discovery Day

### Behind the Scenes at Melbourne Zoo and Royal Park Visit

Saturday 25 March  
2017  
9am to 3pm

At 9am, meet outside the gate at Melbourne Zoo, Parkville

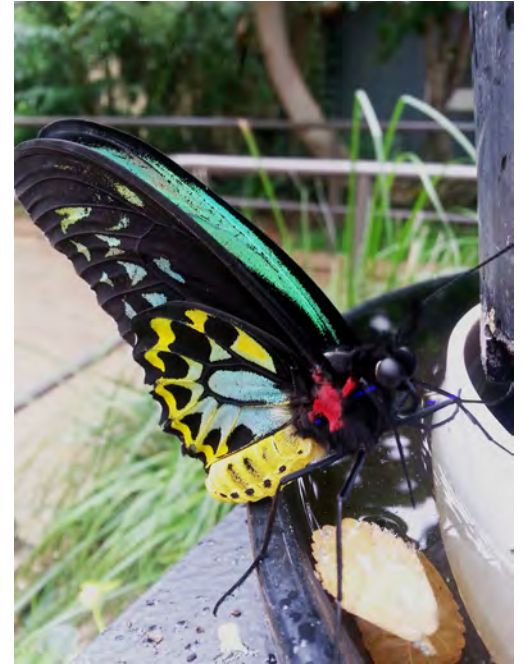
Members \$20  
Non-Members \$25  
Students \$10

Chloe Foster

Go behind the scenes of Melbourne Zoo's Butterfly House and Nursery. See how the invertebrate keepers rear the many species of larvae that metamorphose into beautiful butterflies for one of the Zoo's most popular exhibits. We are fortunate to be given access to go behind the scenes of the Butterfly House and the nursery that grows food for larval rearing. Whilst in the precinct we will walk through the remnant grassy woodland of Royal Park, stopping at the old Royal Children's Hospital site that has been turned into a playground and parkland with Indigenous plantings. The day will finish with a walk through the Australian Native Garden within Royal Park.

Wear your walking shoes and be prepared to see a part of our beautiful city that you may have only driven past! We will meet at the Rail Gate entry at Melbourne Zoo and proceed to the nursery before touring through the Butterfly House. After the tour we'll stop for morning tea at the Zoo before walking through Royal Park to the RCH garden and the Australian Native Garden. We will stop for lunch at a nearby café or you can bring your own lunch.

Public transport is recommended. The Royal Park station is directly opposite the Rail Gate entrance of Melbourne Zoo. Car parking is available at Melbourne Zoo, at a small cost, but it is limited to 5 hours. There is all day car parking along The Avenue road on the north side of MacArthur Rd but it isn't close to the Zoo or Royal Park locations where we'll be. So, be ready to do some walking!!



Cairns Birdwing Butterfly. Photo: Chloe Foster.



Royal Park from the air

## Community Day

Cranbourne Friends  
Host RAW Garden  
Community Members

Sunday 12 March,  
10.30am

Cranbourne Gardens,  
Elliot Centre

At the Open House afternoon on 9 March, Mariam Issa will speak to the Friends about her early experiences in Australia explaining why and how she helped establish the RAW Garden < <http://raw-australia.org.au/>

On Sunday 12 March the Cranbourne Friends will host a visit by the RAW Garden community members.

This is a wonderful opportunity to show off the Friend's facilities, the Australian Garden and the bushland to our visitors from RAW. We all have stories such as why we joined the Friends and of Friends trips and

activities. Please come along and share these experiences.

The day will start at 10.30 am with morning tea at the Elliot Centre.

Please come along and help with this free activity.

For more information or offers of help contact:

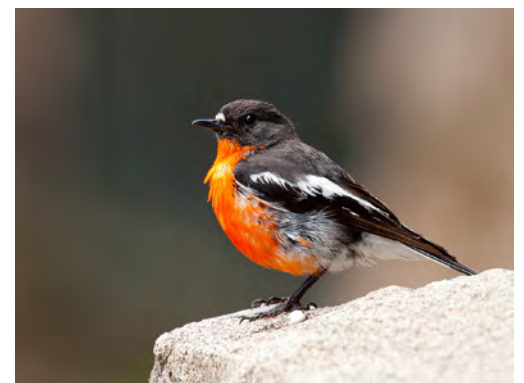
Christine Kenyon [cekenyon@bigpond.com](mailto:cekenyon@bigpond.com) or phone 9589 2154 .

## Friends Trip to Mount Hotham

12 to 16 January  
2017

**Right:** Some of the group on Little Mount Higginbotham after sighting their first Bogong Daisy Bush, *Olearia frostii*. Photo: Marg Margitta

**Far Right:** A male Flame Robin in the Hotham Village. Photo: Chris Clarke



Here are a couple of photos taken at our recent trip to Mount Hotham. The full story will appear in the next edition of Naturelink.

**Discovery Day****RAW Garden and Veg Out Community Gardens, St Kilda**

Tuesday 2 May,  
2017  
10am to 3pm

Location and  
Directions: See  
article

Members \$15  
Non-Members \$20  
Students \$10

The Friends are making a visit to the RAW Garden after their community will have visited Cranbourne Gardens in March. It will be a morning visit. Mariam will explain the garden to us and the activities supported by their community. This is a wonderful and inspirational garden group.

Lunch will be a BYO picnic in the O'Donnell Gardens, Shakespeare Grove, opposite the Veg Out Community Gardens, or it could be in the garden itself.

After lunch we will visit the Veg Out Community Gardens, St Kilda.

Located on an old bowling green with more than 140 plots, the Veg Out Garden is an organic, chemical free community garden run by volunteers. Described by the members as a fertile and creative place, it's an oasis within the bustle of St Kilda.

We can finish the day with coffee in Acland Street.

**Location:** RAW: 325 South Rd, Brighton East VIC 3187.

**Location:** Veg Out Community Garden: cnr Shakespeare Grove & Chaucer Street, St Kilda 3182 (behind Acland Street, near Luna Park). Parking may be an issue and will be metered. Smith St Car Parking is nearby.

**Directions:** RAW, Brighton to St Kilda there are 2 routes:

**Route 1** Via Nepean Highway (fastest route). Along South Rd; turn left at Cummins Rd and left into Nepean Highway. Turn left into Carlisle St, sharp left on to Acland St, turn right on to Shakespeare Rd

**Route 2** do a U-turn at Kendall St and travel west along South Rd to Beach Rd. Travel along Beach Rd and turn right at Blessington St. Turn left on to Spencer Street. Turn right onto Shakespeare Grove

**For more information contact:**

Christine Kenyon: cekenyon@bigpond.com or phone 9589 2154

**All Day Workshop****Backyard Trees**

Sunday 30 April  
2017  
9.30am to 4pm

Australian Garden  
Auditorium,  
RBCV Cranbourne  
Gardens

Members \$65  
Non-members \$70  
Students \$30

Chloe Foster

When you look out on the horizon and see the beautiful trees, did you know that there are more species than wattles and gums? Many of us are familiar with only a small percentage of our native trees; this workshop aims to introduce you to many more species. Come and broaden your tree horizons! Learn about all of the other wonderful species of Australian trees that we have and what you could add to your garden.

Once again we will have a varied group of presenters. We will learn about the evolution of these fascinating trees, how shrubs can become small trees and much more. Joining us as presenters will be Chief Botanist & Director of Plant Sciences & Biodiversity at the National Herbarium Professor David Cantrill who will lead us through the developmental history of these fascinating plants. Dr Alistair Watt will speak about Australian Gymnosperms. The highly renowned Dr Gregory Moore will



Young and mature plants of *Allocasuarina decaisneana* beside the 'Red Centre Way', Northern Territory. Photo: Rodger Elliot

be speaking about the importance of urban tree planting in Melbourne. Our very own Rodger Elliot will speak about Sheoaks and the Daintree Pine while John Thompson will lead us through the social and cultural uses of our backyard trees. We will also wander through the Australian Garden to come face to face with some of these treasures.

**Discovery Night Microbats**

Sunday 9 April,  
2017  
5pm to 9.30pm

Elliot Centre, RBGV  
Cranbourne

Members \$25  
Non-Members \$30  
Students \$15

Microbats are fascinating creatures that have probably passed by you at night without you even noticing! This is not surprising considering how small they are (they weigh as little as 3 grams!). They enjoy nothing more than gorging on insects once it is dark and locate their prey by relying on echo-location. This is done by emitting high-pitched sounds that bounce off any surrounding objects, alerting them to how far away objects are.

If you are interested in seeing some for yourself and learning more about these fascinating creatures, then you must join us.

The night will begin with the setting up of traps in the bushland at the Cranbourne Gardens, followed by a talk about what

Microbats are and which species are found in the area. Attendees can then enjoy their dinner (BYO) and mingle with other like-minded people whilst we wait for night to set in and for the Microbats to come out. We will then set out to inspect the traps and identify those bats that have been caught, as well as keeping an eye out for any other wildlife we might see!

If this is something that you are interested in, ensure that you book early as numbers will be limited to 25 people.

Amy Akers



## ADVANCE NOTICE - JUNE 2017 ACTIVITIES

**Bushland  
Breakfast with  
Warren Worboys**

Saturday 3 June at  
8am

Elliot Centre, RBGV  
Cranbourne

Members \$15  
Non-Members \$20  
Students \$10

Chloe Foster

Join with other Friends for an informal barbecue breakfast with the Royal Botanic Gardens Victoria's longest serving employee, Warren Worboys, who is also an Honorary Life Member of the Cranbourne Friends. Warren has been based at Cranbourne from before the Friends were formed 25 years ago.

We'll start with brekky at the Elliot Centre before going for a wander to explore the bushland area of the Cranbourne Gardens under the expert guidance of Warren. Be prepared for wintry weather, rug up and wear your walking shoes.

Entry to the Cranbourne Gardens will be at the West Gate (back gate) on Ballarto Road.



A delightful vista along a Cranbourne Gardens bushland track. Photo: Amy Akers

For further information contact: Chloe Foster  
9725 3569

**A day with  
Attila Kapitany  
- Australian  
Succulents and  
Boabs, and Bottle  
Trees**

Saturday 17 June  
2017

First Talk: 10.30am  
to 12 noon

Second Talk: 2pm  
to 3.30pm

Australian Garden  
Auditorium,  
Cranbourne  
Gardens

Pricing: See article

Attila, an expert and author on succulent plants, will share his knowledge by giving us an illustrated talk on succulents. He is an excellent speaker and presenter.

He will provide a fresh approach to conventional attitudes and ideas about diversity and beauty. With well over 20,000 species of Australian plants, at least 400 are considered to have a notable degree of succulence and some are stunning plants.

While some people are aware that Australia has the Queensland bottle tree, *Brachychiton rupestris*, most aren't aware of several other species within the genus that also develop bottle-shaped trunks, such as *Brachychiton compactus*. This is a much rarer and much more spectacular species, primarily because its flowers are large and the canopy luxuriant.

The day will start at 10 am with Attila in the Gardens Shop and signing purchased books, followed by morning refreshments and an informal discussion with Attila in the Auditorium. At 11 am Attila will undertake a presentation on Australian succulents.

In the afternoon Attila will be in the Auditorium to chat with people from 1:45 pm and at 2 pm will give his presentation on Boabs and Bottle Trees which will be

followed with afternoon refreshments and time for further informal discussion and signing of books. Attila will then head for the Gardens Shop for about 30 minutes for his final stint there.

Pricing:

Morning talk and refreshments: Members \$20, Non-members \$25, Students \$10

Afternoon talk and refreshments: Members \$20, Non-members \$25, Students \$10

All Day: Members \$30, Non-members \$40, Students \$15

Bookings will be accepted from 1st June on booking form in Winter Naturelink.



A stately Boab, *Adansonia gregorii*. Photo: Michele Kapitany.

**The Iconic  
*Eucalyptus* and  
their Status  
by Dr Frank  
Udovicic**

Sunday 25 June

Australian Garden  
Auditorium,  
Cranbourne  
Gardens

Frank Udovicic is a graduate of the University of Melbourne School of Botany and has been interested in *Eucalyptus* species for a long time. His research has been in molecular genetics and systematics, but do not let that scare you off! He has been exploring the relationships between *Eucalyptus* species and Angophoras, the Eudesmia subgenus of *Eucalyptus* and Corymbias as well as *Callistemon* & *Melaleuca*.

Some people are concerned or even confused over the recent changes to the names of *Eucalyptus* species. Frank, who is heavily involved in this research, will provide an

overview of the debate concerning the naming and classification of Australia's most important tree species and their close allies.

Frank was unable to give this talk at one of our earlier workshops and we are delighted that he is able to do so now. This will be a fascinating afternoon!

Pricing:

Members \$20

Non-members \$25

Students \$10





## REGULAR MONTHLY ACTIVITIES

The Cranbourne Friends run several regular monthly activities, which are described below. If you are interested in participating in any of these activities, even on an irregular basis, please ring or email the contact person, or just turn up. Don't worry if you don't have specific skills, you will learn on the job, and you will be made most welcome!

### Open House at the Elliot Centre

Every Thursday  
1pm to 4pm  
RBGV Cranbourne

#### Contact

Helen Morrow  
9850 9125



Mariam Issa

The Elliot Centre is open on the second Thursday of each month from 1pm to 4pm. Members are invited to come along to interesting and inspiring presentations or call in after visiting the Friends Nursery to enjoy afternoon tea with other Friends.

**To Prune or not To Prune** was the presentation in October. Rodger Elliot led us through the "Reasons Why": nip off the tips when walking around the garden to keep the plant bushy, to make the plant more vigorous promote growth and more flowers, to trim away spent flowers and unwanted branchlets. "Know your plant": Some will respond with just light pruning, others can be cut very hard into the old wood and respond like a new plant. "Tools": they must be sharp, they must be clean, then wiped over with bleach so that you don't spread disease. The presentation finished when 38 enthusiastic Friends followed Rodger out into the area

around the Elliot Centre to see a practical demonstration of what we had just learned.

Thank you Rodger for sharing so much of your knowledge, it was a monumental effort and very much appreciated. We promise to give you a rest this year.

#### Future Topics for Open House - Starting at 2pm:

March 9 - Culture and Community Day with Mariam Issa, Founder of the RAW Garden.

April 9 and May 13 - To be advertised in Quicklink

These events are free with afternoon tea supplied. Members can consult the Friends' Reference Library from 1pm to 4pm.

The Friends Nursery is open on Thursday to 2.00pm.

### Botanical Fabricators

2nd Tuesday of each month  
10am  
Elliot Centre

#### Contact

Gwen Elliot  
8774 2483

fabricators@  
rbgfrienscranbourne.  
org.au

2017 promises to be another busy and exciting year for the Botanical Fabricators group.

The sixth AUSTRALIAN TEXTILE EXHIBITION is being held in the Australian Garden Visitor Centre from Tuesday February 28th 2017 through to Sunday March 5th, opening from 10am to 4pm each day.

Our monthly get-togethers will continue on the second Tuesday of each month and we are always delighted to welcome visitors and new members.

If you would like more information about how to get involved, contact Gwen on 8774 2483 or via email at fabricators@rbgfrienscranbourne.org.au.

### Botanical Basketmakers

3rd Saturday of each month  
10am to 2pm  
Elliot Centre

#### Contact

Lyn Lochrie  
0437 759 610

basketry@  
rbgfrienscranbourne.  
org.au

We are a small group who would love to welcome new members into the world of Basketry! Using Native Plant material from our gardens, we make items that can be useful or sculptural and decorative.

At our monthly meeting we mainly work on our own projects whilst having a cuppa and a chat. Beginners are most welcome and we can supply a small amount of material and advice on how to get started. Garden walks to identify suitable plants and workshops are also available.

If you are an experienced Basketmaker, I'm sure you would enjoy getting to know this lovely group, whilst working on your own project.



Baskets in production and tools. Photo: Lynn Lochrie

## Botanical Illustrators

1st and 3rd  
Wednesday of each  
month  
10am to 3pm

Elliot Centre,  
Cranbourne  
Gardens

### Contact

Margaret Holloway  
0438 985 382

illustrators@  
rbgfriendscranbourne.  
org.au

## Wednesday Botanical Illustrators Group

The Botanical Illustrators group meets regularly in the comfort of the Elliot Centre to enjoy the pursuits of painting, drawing and sharing ideas. We support and encourage each other, hold workshops and talks and work towards holding exhibitions. We welcome visitors and new members.

### Morning Talk with Sandra Sanger – 16 November, 2016

Sandra Sanger described her road to success at the prestigious UK Royal Horticultural Society's Annual Botanical Art Competition. In 2016 she won her fourth gold medal. She discussed this as well as her 2013 entry which also won a gold medal. The theme at the last two exhibitions was Orchids, *Paphiopedilum* and Australian Natives. Sandra brought many examples of her stunning art for us to peruse and explained some of the technical aspects of her practice.

Sandra has been a botanical artist for many years and has produced a significant body of work. Her paintings are held in collections in Australia and overseas. This was an excellent opportunity to see Sandra's fabulous work up close and was much appreciated by her audience.

### Beginners' Introduction to Botanical Illustration with Margaret Holloway 17 - 18 October 2016

This well-attended 2-day workshop covered creating a true representation of the chosen subject using graphite, including observation, measuring, foreshortening, creating volume and surface rendering. Subjects were Corella pears for understanding volume followed by flowers for observation and structure. Participants achieved very pleasing results. Instruction was by Margaret Holloway, who is an experienced art teacher and botanical artist.

## Botanical Illustrators Events

### Beginners' 3-day Watercolour Workshop with Marta Salamon

27-29 March 2017  
10am to 3pm

Elliot Centre, RBGV  
Cranbourne

Members \$285,  
Non-members  
\$315

Bookings via booking  
form. Information:  
Margaret Holloway,  
0438 985 382

This workshop will follow on from the beginners' drawing workshop held in 2016, although participants need not have attended the previous workshop. All materials will be supplied.

The workshop will cover basic colour mixing, creating light and dark within the composition and the varied ways to apply paint at different stages of the painting, starting with a wash. A line drawing will be supplied by the tutor so that all the time can be spent painting. The subject will be decided closer to the time of the workshop and will depend on what plant material is available. Alternatively, students can bring in their own drawing ready to transfer onto a piece of A4 watercolour paper.

Marta is a highly experienced botanical artist and art teacher, has exhibited widely for many years and won the Celia Rosser Medal at the 2016 Art of Botanical Illustration exhibition in Melbourne for her painting Blackwood Wattle. In 2016, she also exhibited at the Museum of NSW Florilegium, the Sydney Botanical Gardens Botanica Exhibition, and won Best in Show

at the Sherbrooke Gallery Australian Wild Exhibition for her painting Brown Owl on Wire.



Marta Salamon, Blackwood Wattle

## Pen & Ink Workshop with Pauline Dewar

22-23 May 2017  
10am to 3pm

Elliot Centre, RBGV  
Cranbourne

Members \$160,  
Non-members  
\$185

This workshop will cover the history of the development of monochrome illustration as an art form, concentrating on the modern use of pen and ink, including materials and methods as well as techniques for achieving interesting, accurate and aesthetically pleasing work. A materials list will be provided on enrolment.

Pauline took up botanical illustration as a retirement pursuit and continues to exhibit in Melbourne and interstate, receiving a Highly Commended Award in the Margaret Flockton Exhibition of Scientific Illustration in 2012-2014 and being accepted as a finalist in the 2014 Waterhouse Art Exhibition. Her

work is represented in the State Botanical Collection as well as in private collections.



Pauline Dewar, Pigmy Possum

Bookings via booking form. Information:  
Margaret Holloway, 0438 985 382.



## Growing Friends

3rd Wednesday and every Thursday of the month

Growing Friends Nursery

### Contact

Marjanne Rook  
9769 7881

growing.friends@rbgfriends.org.au

To join our Growing Friends or to receive more information, contact Marjanne on 9769 7881 or Don on 9736 2309.

## A Happy Kangaroo Paw Picnic Weekend

After months of preparation for this event, it finally came, with the Growing Friends situated on the lawn at the Ian Potter Lake Precinct, selling a marvellous range of kangaroo paws. It was a pleasure to be there enjoying the lovely sunny weather and looking out over the lake. Then on a very windy Monday we moved to the forecourt of the gardens for a few days where we continued to sell more kangaroo paws for a few days. In total we sold \$14,000 worth of kangaroo paws. More paws will be available at the autumn plant-sale.

## Autumn Plant Sale

The autumn plant sale will be on the weekend of 18 and 19 March in the Australian Garden. If you have a swampy area or a pond in your gardens you may be interested in the following plants we have for sale. Our plant list will be emailed to you and will also be available on the Friends website: [www.rbgfriendscranbourne.org.au](http://www.rbgfriendscranbourne.org.au), one week prior to the sale.

*Baloskion tetraphyllum* - tassel cord rush - a beautiful rush with green feathery foliage and brownish flower heads and can be grown in sun or dappled shade, with a height of about 1-1.5m. This plant can be grown in a container immersed in shallow water.

*Goodenia humilis* - swamp goodenia - a lovely small ground-hugging suckering plant with bright yellow flowers, from spring to summer, in sun or part-shade.

Another plant we have for sale is *Asplenium australasicum* - the bird nest fern - which likes moist soils but it also tolerates slightly drier sites. It is a large fern with broad flattish fronds and can reach a height of 1 - 2 m and width of 2 - 4 m. It can also be grown in a large pot or as a somewhat smaller indoor plant. This plant requires dappled shade but not the western summer sun.



The kangaroo paw plants were just waiting for customers to come and take them away!  
Photo: Marjanne Rook.

We will also be selling a small range of small Eucalyptus among which is *Eucalyptus lehmannii* - bushy yate - a decorative mallee tree with a compact habit that can have branches almost to the ground. This plant has blooms in 10 - 12 cm ball-like clusters of light greenish flowers and pale to deep green leaves, with a height of up to 6 m. Its bark is smooth, with a combination of light pink, to grey-brown and orange-brown shedding in strips.

We will also be selling *Eucalyptus macrandra* - long-flowering marlock - a small tree with large clusters of yellow flowers and red fruits which are bird-attracting. The bark is greyish smooth and is shed late summer/early autumn and the new bark is greenish-brown. This tree grows to a height of 7m and Wikipedia tells me it can be used for Bonsai!

## Special Orders

Any wishes? Perhaps a plant you have seen in the Gardens or multiple plants for a large area that you would like. Contact the Growing Friends with your request and we shall endeavour to grow them or may even have them in stock. Contact details are on this page.

## New Defibrillator for the Australian Garden site

The Cranbourne Friends are so pleased that the Cranbourne Gardens have installed a new defibrillator on the wall of the Australian Garden Visitor Centre Walkway near the Gardens Shop, we thought we would include a picture in Naturelink!

The defibrillator is in a place where it is accessible during the day or night and is a most welcome addition to the site.



## Waratah Pruning Master Class at RBGV Cranbourne

Thursday 27 October

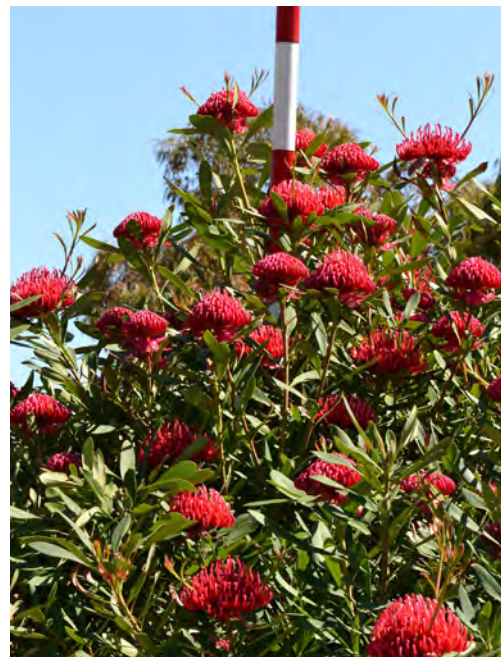
by Mirini Lang

**Waratah Pruning with Josie Vaganiance, Senior Horticulturalist and Coordinator of Horticulture, at RBGV Cranbourne Gardens.**

On a Thursday morning in October, the Friends of RBG Cranbourne were invited to join Josie in the Future Garden to learn how to prune Waratahs, as they are different from many other native plants. They are in the Proteaceae family and like slightly acidic soil with a pH 5.5 - 7. They like part to full sun but not the hot afternoon sun. Ideal conditions include constant moisture with good drainage and cool roots.

The main Waratahs which Josie focused on were *Telopea* 'Braidwood Brilliant' (*speciosissima* x *mongaensis*) and *Telopea speciosissima* 'Corroboree'. 'Braidwood Brilliant' is used in the cut flower trade because it produces a single flower on each long stem. It tolerates colder climates like Canberra and grows 2-3 m tall. 'Corroboree' has a more compact flower and produces multiple flowers on each stem. This gives a denser floral display in the garden. It is a slightly smaller shrub than 'Braidwood Brilliant'.

Before commencing the pruning, Josie cleaned her secateurs and loppers with 1:4 methylated spirits and water to remove any grime and to kill pathogens. The timing of pruning is important as shoots for the following year's flowers come soon after the current flowers have finished. If these new shoots are removed too late, more shoots will not come for another year. New growth generally keeps sprouting until December, although this varies a bit depending on the particular Waratah, such as *Telopea* 'Bridal Gown', one of the white-flowered Waratahs. Josie found that the new growth in this plant happens very quickly after the flowers finish, so pruning needs to be done very soon after flowering. Ideally, commence pruning before the new shoots appear by removing



*Telopea* before pruning

the flower with up to 1 m of stem. This will stimulate new shoots to appear from various nodes around the remaining stem. The amount of stem to remove will depend on the desired height and shape of the shrub. Some stems should be cut to inward facing buds and some to outward facing buds to avoid large gaps in the middle of the shrub.

Waratahs have lignotubers so theoretically they can be cut to ground level and reshoot. However, Josie tends to prune the stem to where it still has leaves. After pruning has been finished (either progressively as the shrub flowers or all at once after flowering) shrubs should be given a phosphorus free native fertiliser. If leaves are yellow, this could be a sign of the plant needing fertiliser or additional iron chelates.

Thank you Josie and the Gardens for this very informative session. It was much appreciated by all who attended.

## Membership Update

Please contact Helen if you have any membership queries:

Phone: 9850 9125; if you leave a message I will return your call

Email: [membership@rbgfriendscanbourne.org.au](mailto:membership@rbgfriendscanbourne.org.au)

We look forward to an exhilarating year of Workshops, Discovery Days, Plant Sales and the Monthly Group's activities. All activities are advertised in Naturelink so please check them out, then just fill in the booking form that comes with this newsletter, send it off with payment to the address on the form. Of course there will be extra adventures along the way which you will hear about through Quicklink. Everyone is welcome and you can bring a friend.

We are pleased to welcome 26 new members this quarter and look forward to meeting them at some of our activities.

We extend a warm welcome to: Alan Anderson, Julia Botham & Wayne Wallace, Cecile Campbell, Pam Chaplin, Dorothy & Howard Cole, Jackie Cresswell, Tiffany De

Lacy & Brett Stadelmann, Ann Duncan, Miriam Ford, Cornelia Homburg, Jenine Martino, Erin Muller, Anne Neilson, Gillian Newnham, Linda Rouette, Faye Spinelli, Alexandra Stalder, Janet Street, Lisa Veugelers, Roger Watts, Barbara Wellstead, Peter Wonfor, Beverley Wylie.

Remember the Elliot Centre is open to members on the 2nd Thursday of each month from 1.00 to 4.00pm. Friends can consult the reference library during these times. Just pop in after visiting the Growing Friends Nursery. Tea and coffee is available and you can join the interesting talk and discussion which is advertised in Naturelink and Quicklink.



## Pre-European Indigenous Culture on the Mornington Peninsula

Sunday 16 October 2017

by Kate Walsh

Gary Presland's excellent presentation was about people, places and plants.

As I age and time contracts, I feel a need to know these things. The lives of previous generations become more immediate just as the life and health of future generations becomes more important.

Noel Pearson quoted Roger Scruton's "*view of society, as an association of the dead, the living and the unborn, carries a precious hint as to how the responsibility for future generations arises. It arises from love, and love directed towards what is unknown must arise from the known. The future is not known, nor are the people who will inhabit it. But the past is known, and the dead, our dead, are still the objects of love and veneration. It is by expending on them some part of our care, Burke believed, that we also care for the unborn. For we plant in our hearts the transgenerational view of society that is the best guarantee that we will moderate our present appetites in the interests of those who are yet to be.*" - Quarterly Essay Issue 55 2014, p. 56.

Gary Presland, archaeologist, historian, and author, spoke eloquently of "white academic" knowledge of life around Cranbourne before Europeans arrived. This knowledge is derived mainly from archaeological sites, the writings of Europeans, and analogy to other areas. Gary acknowledged the importance of other perspectives to give well-rounded insight.

The depth of human history in this area was brought home to me when Gary referred to 28-35 thousand year old middens revealed during East-link construction.

As Gary said, "All human cultures are complex." He spoke of nations, language groups, clans, moieties and the un-named bands of 15-20 people who were bonded by family affiliation and undertook day-to-day economic functioning.

The local Boon Wurrung (Bunurong) people were one of 6 language groups, correlated with topography and drainage basins, belonging to the Kulin nation which extended to the Murray River. The

Kulin were a cultural group with their own tongue, thought and kin systems. All Kulin would be at least bi-lingual and believed in the same creator spirit beings (primarily Bunjil, the eagle, and Waa, the crow). They married within their culture according to strict protocols. The clan was the most important group identifying with a particular 'estate.' For instance, the Mayone-bulluck clan of the Boon Wurrung lived in the Cranbourne area. Their daily needs could be satisfied with about 4-5 hours work which left time for important things such as family life and elaborating spiritual connections with country. There was entrenched animosity between the Kulin and Gippsland Kurnai nations but trade occurred with groups in other directions.

### And where did plants fit into all this?

Plants were, as ever, also important - a source of food, fibre, medicine, tools and shelter. Nine hundred and forty plant species have been recorded as food resources in Victoria and in 32% of cases underground parts were used. Fire used as a management tool created productive, herb-rich, open, grassy woodland landscapes. Consequent digging for tubers, from herbaceous species such as *Microseris lanceolata*, orchids and lilies fertilised the soil with ash, maximising the growth of these species.

Wetlands, such as the 'Carrum Swamp', with their enormous biodiversity, were also very significant and rich in resources. Coastal areas were commonly exploited especially in summer. In winter the people tended to move to the southern Dandenongs where they could find shelter.

My sense of place and appreciation of the Westernport area and its plants is enhanced by Gary Presland's insights into the lives of our predecessors. I am proud to acknowledge the Boon Wurrung people as the traditional owners of these lands and waters.

## Cranbourne Friends Committee

<b>President:</b> Indra Kurzeme	0408 002 026
<b>Secretary:</b> Helen Kennedy	9560 0185
<b>Vice President:</b> Helen Morrow	9850 9125
<b>Vice President:</b> Amy Akers	0423 513 281
<b>Immediate Past President:</b> Richard Clarke	5974 1750
<b>Treasurer:</b> Karen Russell	9878 4857
<b>Membership Secretary:</b> Helen Morrow	9850 9125
<b>RBGV Representative:</b> Chris Russell	5990 2200
<b>General Committee</b>	
Margaret Clarke	5974 1750
Rodger Elliot	8774 2483
Chloe Foster	9725 3569
Christine Kenyon	9589 2154
Marjanne Rook	9769 7881
Roger Watts	TBA

<b>Bookings Officers</b>	
Marjanne Rook	9769 7881
Ros Shepherd	5932 5611
bookings@rbgfriendscranbourne.org.au	
<b>Activities Sub Committee</b>	
Rodger Elliot, Coordinator	Alex Smart
Amy Akers	Barrie Gallacher
Lyn Blackburne	Barbara Jeffrey
Margaret Clarke	Liz McDonald
Richard Clarke	Marjanne Rook
Chloe Foster	Ros Shepherd

**Naturelink Editor:** Ashley Michailaros  
naturelink@rbgfriendscranbourne.org.au 0408 949 914

**Quicklink Editor:** Chloe Foster 9725 3569

**Social Media Convenor:** Amy Akers 0423 513 281

The Committee meets on the second Thursday of the month at 6pm.

## What's up in the Bushland

### Indigenous Acacias at RBGV Cranbourne Gardens

by Mary Thackeray

There are close to 1000 species of *Acacia* native to Australia, making it our largest genus of vascular (sap-bearing) plants. The common name 'wattle' comes from the wattle and daub huts made by early British settlers in Australia. Various types of Acacias were ideal for this work because their cut stems were so flexible.

There are ten Indigenous Acacias recorded on site of which three are trees and seven are shrubs. These are indigenous to the sand-belt area with some being locally rare in certain areas, such as *Acacia stricta* in Bayside. A number of the smaller shrubs would make good garden plants, particularly if you are trying to create habitat for small birds due to their prickly foliage.

*Acacia brownii* (heath wattle) is a small shrub (the smallest of the indigenous wattles on site) with prickly foliage and is considered rare in the Melbourne and Westernport catchment areas. You can see some growing near the gates that lead out to the Woodland Picnic Area (WPA) and in the coach parking area nearby. It flowers from winter (August) to early spring.

*Acacia suaveolens* (sweet wattle) is so named due to the sweet scent of the flowers is a light, open shrub that can also be seen in the coach parking area and along the path towards the WPA gates from the Entry Orientation Shelter. These were planted as apparently there were only two plants growing naturally on site, in the ecotonal area of the Depot. It is one of the earlier flowering wattles with pale yellow flowers in winter and has attractive seed pods after flowering. Hard pruning encourages strong new growth with attractive grey foliage.

*Acacia oxycedrus* (spike wattle) is a medium sized shrub with prickly dense foliage and cream flowers. This is the most common *Acacia* species on site, scattered throughout the heathlands. This species hybridizes readily with the weedy *Acacia longifolia* (Sallow Wattle).

*Acacia paradoxa* (hedge wattle) is a larger prickly shrub with sharp spines and as the name suggests, it would make a good hedge if you wanted to keep animals (or people) out! It has a strong yellow coloured flower. This can be seen growing typically on the heavier soils on site in various places including on the way out to WPA.

*Acacia stricta* (hop wattle) is a medium shrub and is another species which typically only grows on the heavier soils on site, in the woodland.

*Acacia verticillata* (prickly moses), as the name suggests, has prickly foliage.

*Acacia dealbata* (silver wattle). The common name of silver wattle refers to the silvery leaves and young, upper branchlets, both due to tiny silvery hairs. Early settlers used the bark for tanning leather. This is the species



*Acacia paradoxa* showing globular flower and spines. Photo: Wendy Lawrence

that is known in Europe in the florist trade as *Mimosa* (from the family name Mimosaceae).

*Acacia mearnsii* (black wattle) is another tree form that looks a bit similar to silver wattle. Black wattle refers to the black bark.

Silver and black wattle both have bipinnate (fern-like) foliage but they flower at different times. You can tell them apart by looking at the raised glands on the leaves. Silver wattle has a gland at the junction of each pair of leaflets on the underside of the axis and black wattle has many glands scattered in between. Neither of these acacias is particularly long lived.

*Acacia melanoxylon* (blackwood) is fast growing and long-lived. The wood is used for furniture making. Blackwood refers to the dark coloured mature timber. Early settlers used the bark for tanning leather.

*Acacia ulicifolia* (Juniper Wattle) is another fast growing, short lived species with spines which provide great protection for small birds and animals. This *Acacia* also grows typically on the heavier soils on site.

There is one *Acacia* on site that is classified as a weed as it wouldn't naturally occur there, *Acacia longifolia* (sallow wattle). This is one of the main woody weeds on site, along with sweet pittosporum. *A. longifolia* subsp. *sophorae* (coast wattle) has also been recorded as indigenous on site but is quite uncommon here.

Acacias often colonise an area after fire (which promotes seed germination) or opening up of a gap in the forest (due to a large tree falling for example). These are the fast growing but not long-lived acacias, which rarely live longer than 15-20 years. They are legumes and so fix nitrogen that helps improve the soil for the plants that follow, thereby playing an important part in succession. The seeds usually have a long viability with a hard coat that requires heat or nicking before germination. There are some long-lived acacias, such as *Acacia melanoxylon*, and *Acacia implexa* (lightwood). The latter is both fast growing and relatively long lived but not found on site. It is widespread but predominantly favours more inland sites.



Continued from previous page..

*Acacia* species are widely blamed for causing hay fever, and some people are indeed allergic to them, but in most cases this is likely due to the pollen from grasses and other plants that are flowering at the same time. Allergy tests confirm this. *Acacia* pollen is relatively heavy (as acacias are insect, rather than wind-pollinated) and so is not carried long distances by wind.

When out in the bushland you may see sawdust at the base of some silver and

black wattles. This is a sign of borers which are bark and wood feeding beetles such as longicorn and jewel beetles. You may also see sawdust around the junction of branches and holes disguised by webbing and frass. Borers live mainly in living but generally weakened plants and in severe cases can cause the death of the tree. In healthy trees exudation of gum restricts borer activity and affected old branches break off.

Many thanks to Warren Worboys for his assistance with this article.

## Kangaroo Paw Celebration of November

by Gwen Elliot

A highlight of 2016 at Cranbourne was the KANGAROO PAW CELEBRATION. It was jointly organised by the Cranbourne Friends and the RBG Victoria. It all started when the Friends invited Angus Stewart to speak at their Annual General Meeting on Sunday 27th November. He agreed enthusiastically and it was decided to also hold a Kangaroo Paw Workshop Day on the Saturday. An email was then sent to Professor Stephen Hopper, former Director of Kings Park Botanic Garden Perth, and also of Kew Gardens London who is botanically regarded as the "Guru" of Kangaroo Paws. He replied within a few hours saying he would "Love to come" – and then everything started to happen at a great pace with speakers and participants all keen to be involved.

The 1-day workshop evolved to a 3-day symposium and speakers included Prof. Kingsley Dixon from WA, who is renowned for his research into the importance of smoke in seed germination, Digby Grown, plant breeder from Kings Park, and also Keith Oliver, Bronwyn Ayre and Ellen Hickman from WA. Dr Brett Summerell came from the Sydney Botanic Gardens and cut flower grower Craig Scott from Gosford. In addition, speakers from Victoria were Jim Fogarty, Loretta Childs, Neil Marriott, and Cranbourne people John Arnott, Rodger Elliot, John Thompson and Amy Akers. Kathy Musial from Huntington Botanical Garden in California came as an attendee.

The first of the three symposium days was held at RBG Victoria Melbourne Gardens and the others at Cranbourne. Comments from attendees included that it was the best conference they had ever attended! Many people felt that the presenters were excellent and that there was virtually no duplication of information by the presenters.

Sponsors also were keen to be involved and we received very valuable assistance from The Maud Gibson Trust, Ramm Botanicals, Gardening with Angus, Northcote Pottery, Garden City Plastics, Confoil, East Coast Wildflowers, Kuranga Native Nursery, the Horticultural Media Association, City of Casey and Neutrog.

A Kangaroo Paw Picnic was organised by Cranbourne staff and held on the weekend



A selection of the Symposium Speakers attended the Celebratory BBQ; (from left) Amy Akers, John Thompson, Angus Stewart, Keith Oliver, Digby Grown, Ellen Hickman, Rodger Elliot and Steve Hopper. Photo: Gwen Elliot.

of 19 - 20 November. A donation of several thousand Kangaroo Paw plants was received, mainly from Ramm Botanicals, and these were planted both in the Australian Garden and in containers to create spectacular displays. Some magnificent floral arrangements were also created and displayed.

The Growing Friends potted up many of the Kangaroo Paw plants, which they later sold raising more than \$14,000). Items made by the Botanical Fabricators using fabrics depicting Kangaroo Paws were also for sale. The Botanical Illustrators and Basketry groups worked for several months creating items that were displayed in the Visitor Centre Gallery, and sales from these items will also assist the Cranbourne Gardens in a wide number of areas.

Sincere thanks go to all who helped in so many ways during November. The Staff at Cranbourne went above and beyond their normal duties to ensure the success of the festival, as did members of the Growing Friends and the other groups mentioned.

A major outcome was that virtually everyone had a very enjoyable time. Visitors to Cranbourne during November were the highest since the Opening of Australia Garden Stage Two in October 2016. Angus Stewart claimed it was a highlight of his life, and other glowing reports of praise have been received from many people.

Thanks to all who came along and participated in so many ways. We hope you enjoyed it also.

## A Splendid 25th Anniversary Annual General Meeting

27 November 2016

A major milestone was celebrated on 27th November 2016 when nearly 70 members gathered for the Friends' 25th Annual General Meeting.

Director Chris Russell was invited to address the gathering before formal procedures and he highlighted a number of significant achievements and plans for the Cranbourne Gardens. He also thanked the Friends for over \$100,000 donated during the 2015-16 period.

Indra Kurzeme, the Friends President, spoke briefly about her forthcoming involvement with the Campaign Council, a new fundraising group focussing on generating significant resources for RBGV, and the commissioning of a Friends history, to be written by Carolyn Landon who gave a brief report on her work so far and what she hopes to achieve in the future.

Following confirmation of all existing committee members in their positions for the new year and acceptance of the financial statements, several resolutions were passed. The first was to change the name of the Friends to "Cranbourne Friends Royal Botanic Gardens Victoria Inc.", to be known as 'Cranbourne Friends'; the second was to amend the rules, to reflect the changes that have occurred in the total organisation.

A highlight of the occasion was the awarding of an Honorary Life Membership to Marjanne Rook, convenor of the Growing Friends and stalwart of the Friends committee. Marjanne has also undertaken several other demanding jobs, as reported by Gwen Elliot, who spoke about Marjanne's service.

This was followed by another highlight as Guest Speaker Angus Stewart, key figure in the recently-concluded Kangaroo Paw Celebrations, spoke engagingly about the Catherine Hill Bay Heritage Village and the program he instigated for propagating the special indigenous plant selections from the area by the Friends of the Australian Botanic Garden Mt Annan. The plants will be used in new land developments at Catherine Hill Bay Village. Angus suggested that perhaps the Cranbourne Friends could become involved in a similar activity with plants from a nearby area. He then cut the anniversary cake. A beautiful Amanda Loudon vase was presented to Angus to thank him for all of his involvement in the Kangaroo Paw Celebration.

A splendid celebratory afternoon tea followed.

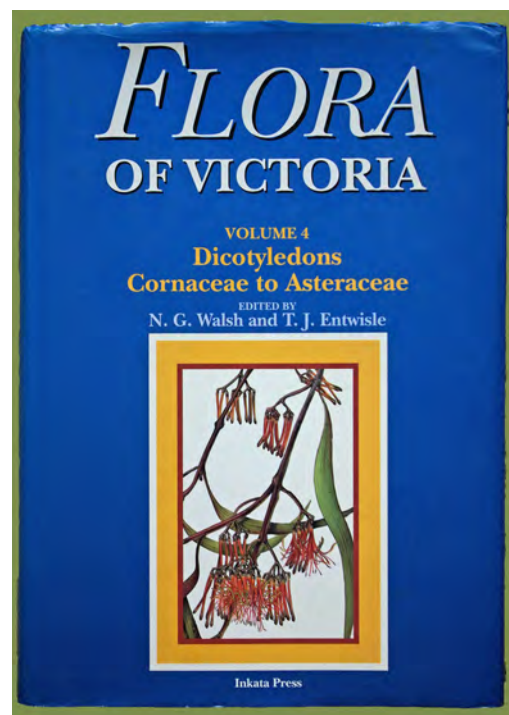
## Friends Library Books in the Elliot Centre

### Flora of Victoria

by Ann Miller  
Honorary Librarian

Thanks to the generosity of one of our Friends, we now hold all 4 volumes of the *Flora of Victoria*. This is a magnificent addition to the Library. Volume 1, edited by D.B. Foreman and N.G. Walsh is an introduction and was described in the last issue of Naturelink. Volume 2, edited by N.G. Walsh and T.J. Entwisle bears the subtitle '*Ferns and allied plants, conifers and monocotyledons*' whilst volumes 3 and 4, also edited by Walsh and Entwisle, cover the dicotyledons of Victoria. Published between 1993 and 1999, the *Flora* is a joint venture by the RBGV and the National Herbarium of Victoria, and was published by Inkata Press. The volumes are considerable in size: vol. 2 comprises 946 pages, while the 2 volumes devoted to the dicotyledons total 2180 pages. The *Flora* covers native and naturalized plants in Victoria. The detailed descriptions of species are accompanied by diagnostic line drawings of all species and a selection of coloured plates and maps showing distribution appear alongside each species. Illustrators include John Armstrong, Anita Barley and Richard Barley.

The *Flora* replaces J.H. Willis' *A handbook to plants in Victoria*, published in the 1970s which was previously the standard comprehensive reference for plant identification in the State. We will continue to hold Willis in the Library collection. "Since the publication of Willis' work, an enormous amount has been published on the flora of Victoria and Australia generally, due largely to the advancement of



Flora of Victoria Volume 4 cover.

the *Flora of Australia* project and publication of various other State and regional floras. In addition to this taxonomic progress, the numerous botanical and ecological surveys have allowed a more precise understanding of the distribution and ecological tolerances of Victorian plants." (Introduction to *Flora of Victoria*)